

PrimeThought Software
Solutions

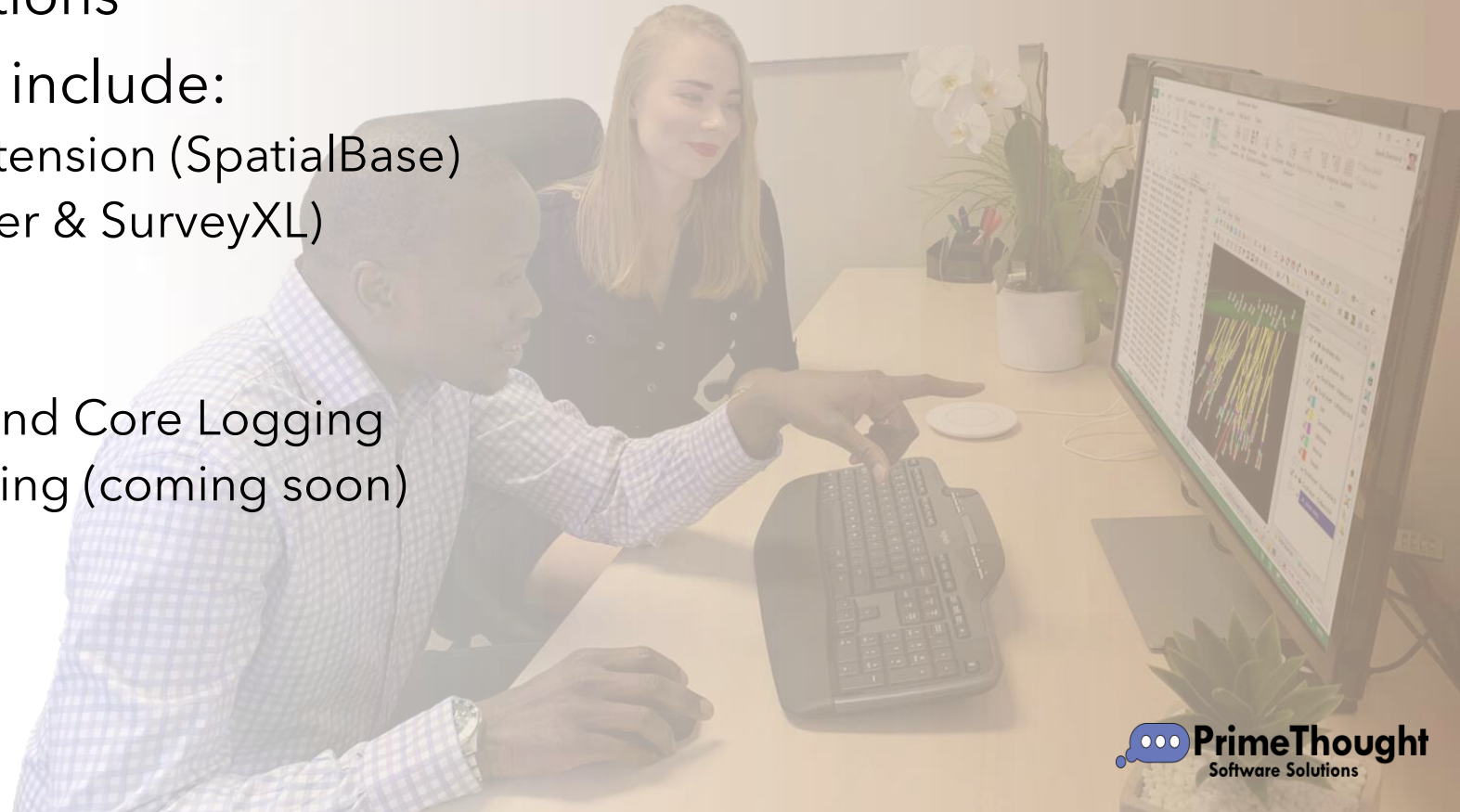
Mining Products

<https://primethought.biz>



Introduction to PrimeThought

- PrimeThought Software Solutions is a well established South African company in operation for over a decade.
- End to end spatial solutions
- Mine technical systems include:
 - 3D Spatial Database extension (SpatialBase)
 - Surveying (MineModeller & SurveyXL)
 - Sampling
 - Financial modelling
 - Geological Modelling and Core Logging
 - Mine Design & Scheduling (coming soon)



Our clients



SpatialStudio

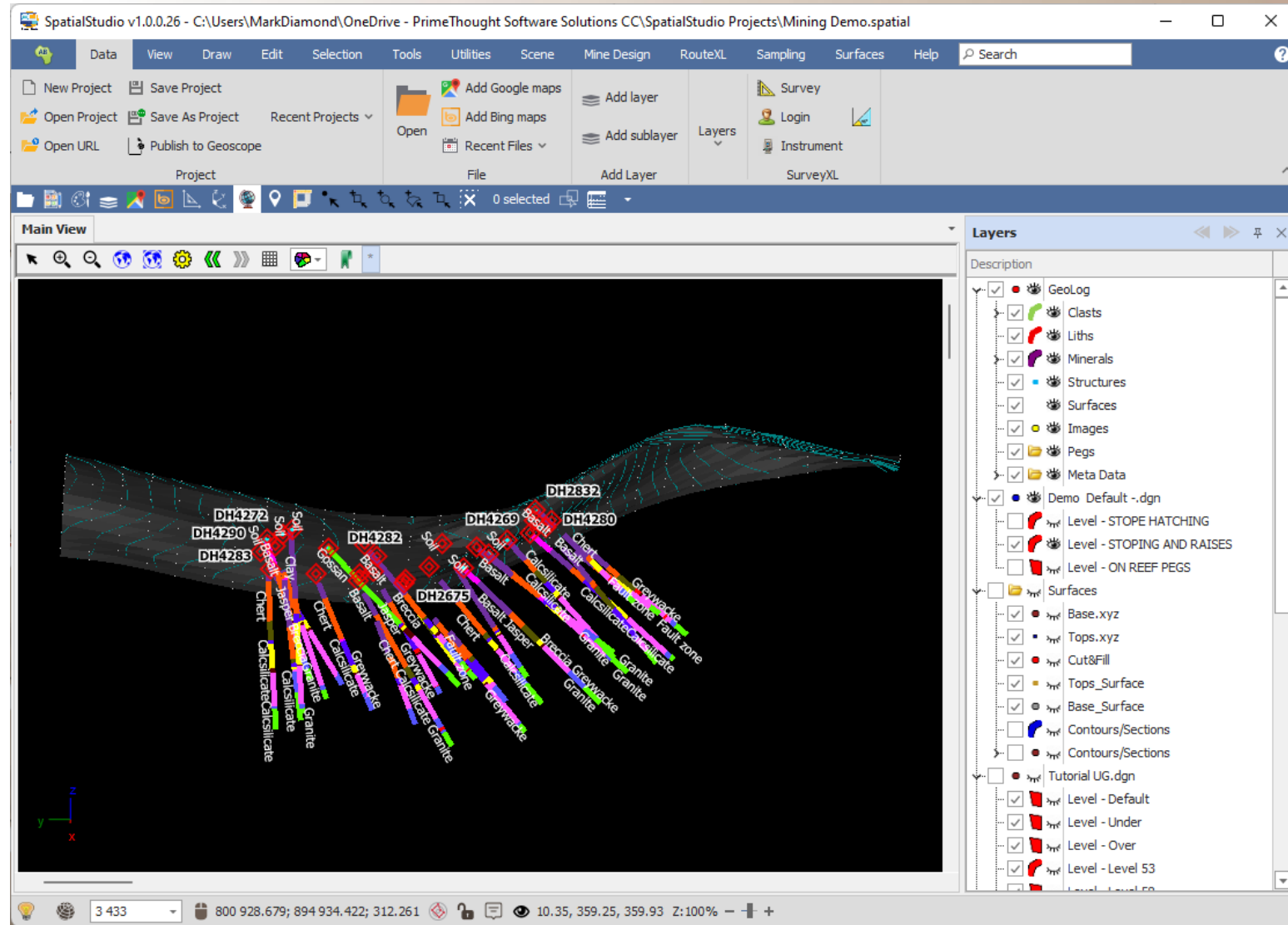
<https://spatialstudio.com/>

SpatialStudio is our dynamic spatial building and analytics tool.

SpatialStudio works seamlessly with 2D or 3D data. Data of almost any format can be brought in and worked with.

SpatialStudio is used in both Spatial BI and the Mining Arena as it is capable and powerful enough to handle both.

All our mining packages plug into SpatialStudio and use it as the graphics environment. This means all work can be done in one integrated environment without the need for various different programs.



SurveyXL & MineModeller

<http://minemodeller.com/> & <http://surveyxl.net/>

SurveyXL & MineModeller are our complete surveying packages for underground and surface mining.

MineModeller is an add-in to Bentley Microstation and SurveyXL is a stand alone package.

Supports all standard survey operations.

DiepSpruit.dgn [2D - V8 DGN] - MicroStation V8i (SELECTseries 1)

Survey v3.9.0.0

Peg ID	Type	Workplace	Backsight	Y	X	Z
CSS3628	Survey	Main	CP74	34801.394	55809.101	
CP7194R	Survey	Main	CP7266R	-33376.921	2959109.105	1
CP7756R	Survey	Main	CP7628R	-32074.632	2961009.234	1
CP8149R	Survey	Main	CP8141R	-30301.305	2953660.600	1
CP8235R	Survey	Main	***	-32149.749	2961918.279	1
CP8275R	Survey	Main	CS3963R	-30514.201	2954056.999	1
CP8300R	Survey	Main	CP8275R	-30531.153	2954093.212	1

Peg Group Projection: <None>

Data loaded for peg group Main Projection: Hartbeesthoek94/Lo15 Main

MINEMODELLER loaded.

MINE BOUNDARY

PrimeThought Software Solutions

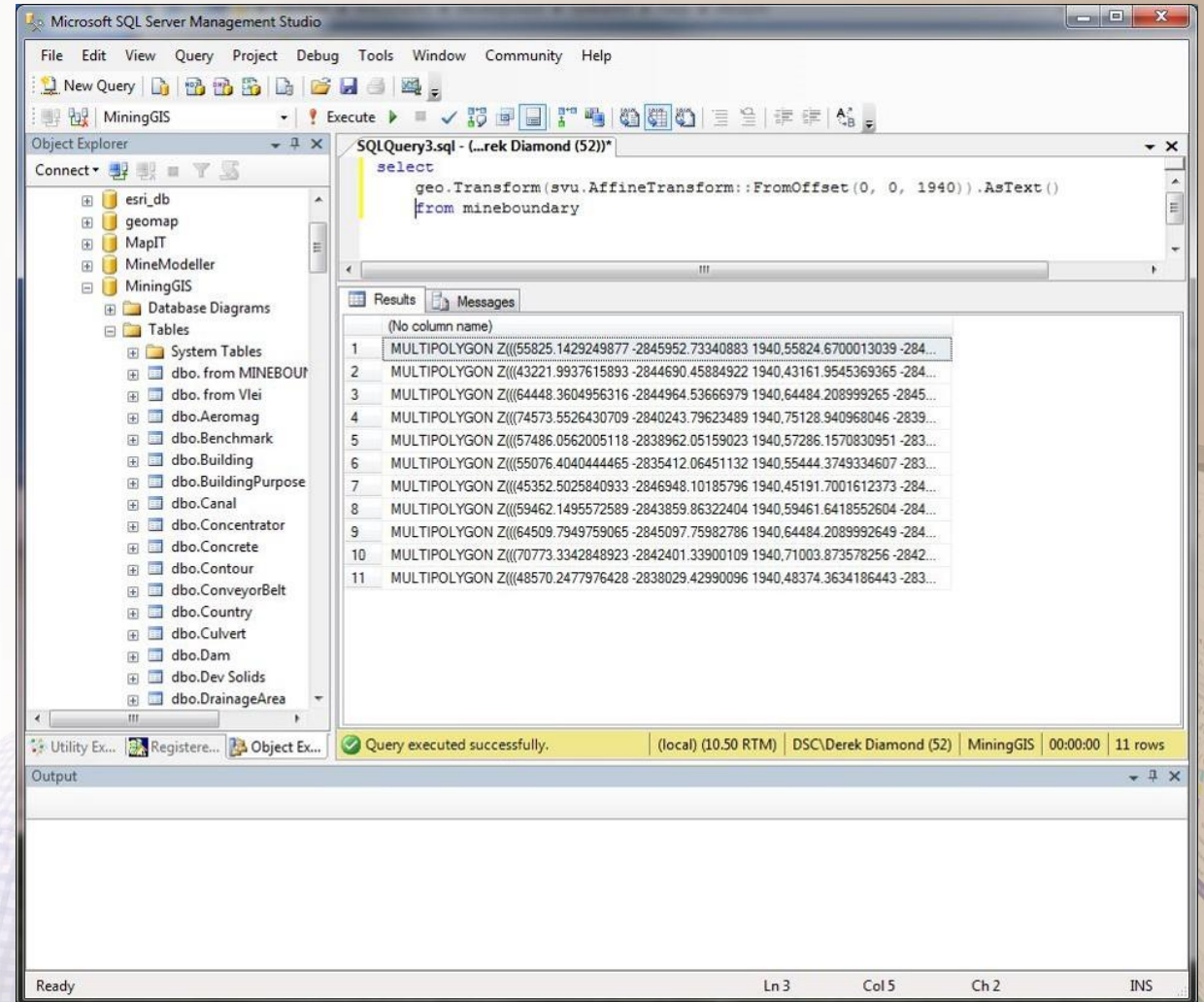
SpatialBase

<http://spatialbase.biz/>

SpatialBase is a 3D geospatial database extension for Microsoft SQL Server.

Complete support for 2D and 3D Spatial objects, SpatialBase provides sophisticated spatial operations like 3D boolean operations, on the fly surface building, on the fly contouring and heat mapping straight off and in the database.

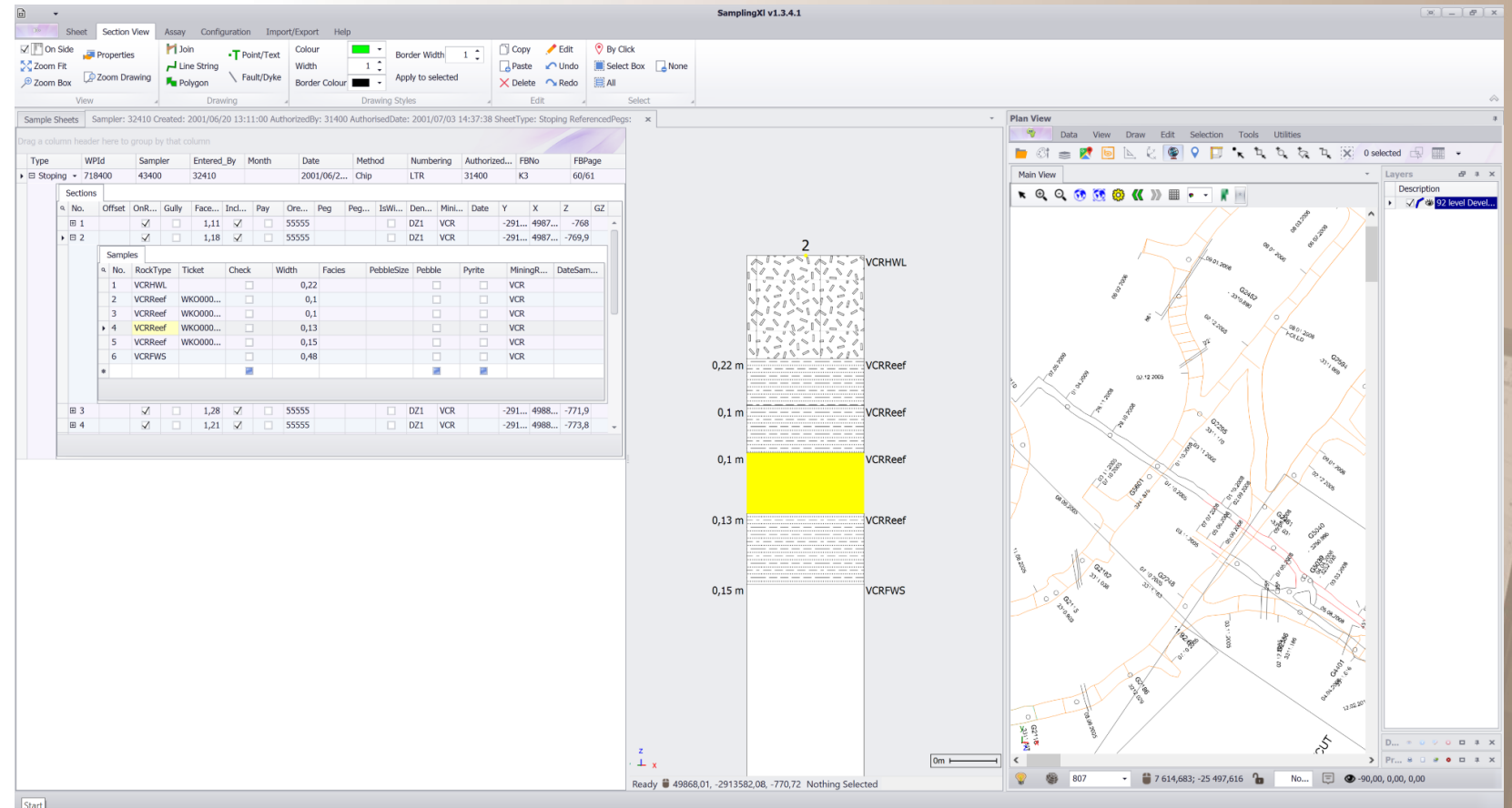
SpatialBase provides the most advanced and enterprise environment for storing and processing geoSpatial, Mining and Engineering objects.



SamplingXL

<http://samplingxl.com/>

- SamplingXL is the most advanced underground sampling solution available.
- Based on our high-performance graphics engine SamplingXL allows you to view any other spatial data with your sampling data. Both Sql Server and Oracle are supported as database backends.



SpatialXL

<http://spatialxl.com/>

- SpatialXL is an add in to Microsoft Excel.
- SpatialXL allows in place access to any mining format in any projection.
- Advanced analytics
- Spatial Dashboarding
- Patent Pending features coming soon

The screenshot shows the Microsoft Excel interface with the SpatialXL add-in. The main window displays a spreadsheet with columns for BHID, X, Y, Z, ENDDATE, REFSYS, REFME, and ENDDATE. The DesignXL interface is overlaid on the right, showing a 3D visualization of boreholes. The DesignXL interface includes a menu (File, Edit, View, Tools), a toolbar, and a Layers panel. The Layers panel lists various data sources and layers, including Boreholes.xlsx, vb_stopo.dwg, and several Excel layers for Assays, Lithology, Surveys, and Collars. The 3D visualization shows boreholes as colored lines extending from a top surface down to a bottom surface, with labels for different lithologies like Sandstone, Siltstone, Breccia, and Basalt.

	A	B	C	D	E	F	G	H
1	BHID	X	Y	Z	ENDDATE	REFSYS	REFME	ENDDATE
2	VB2675	6085.686	5145.946	187.552	333.2869	Local	GPS	11/11
3	VB2737	6036.173	4992.858	169.1106	274.2373	Local	GPS	12/9
4	VB2812	5986.802	5053.235	176.425	294.1175	Local	GPS	12/28
5	VB2813	5988.578	5212.757	194.4131	279.0412	Local	GPS	3/15
6	VB2832	5923.143	5033.444	173.9933	216.5309	Local	GPS	2/27
7	VB4266	5939.779	5085.957	179.6231	238.8206	Local	GPS	2/6
8	VB4267	5939.94	5150.795	185.4029	237.5684	Local	GPS	1/18
9	VB4269	5962.774	5044.509	175.5531	239.1833	Local	GPS	1/15
10	VB4270	5969.056	5125.991	183.8764	288.95	Local	GPS	3/4
11	VB4271	5966.589	5173.773	188.8281	270.6564	Local	GPS	3/16
12	VB4272	5963.368	5155.974	186.7524	237.4559	Local	GPS	3/21
13	VB4280	6014.103	5012.276	171.5929	234.9216	Local	GPS	3/30
14	VB4281	6020.092	5105.895	182.1747	289.2156	Local	GPS	11/17
15	VB4282	6012.707	5159.079	188.5384	243.4154	Local	GPS	12/6
16	VB4283	6013.048	5195.884	193.285	214.4347	Local	GPS	2/8
17	VB4285	6035.916	5124.563	184.4143	288.0002	Local	GPS	4/4
18	VB4286	6034.155	5190.557	193.1237	228.4976	Local	GPS	5/25
19	VB4287	6054.479	5025.633	172.7135	258.0155	Local	GPS	2/28
20	VB4288	6056.862	5115.736	183.3194	285.6416	Local	GPS	5/30
21	VB4289	6060.021	5136.659	186.1202	241.8091	Local	GPS	12/18
22	VB4290	6062.064	5234.752	200.2036	251.2287	Local	GPS	1/15
23	VB4291	6084.98	5128.757	185.0513	267.7438	Local	GPS	12/9
24	VB4292	6109.74	5146.881	187.8433	308.1141	Local	GPS	3/21
25	VB4293	6110.513	5149.726	188.2879	265.1832	Local	GPS	2/18
26	VB4294	6119.403	5163.085	190.416	231.5267	Local	GPS	12/28
27	VB4295	6118.004	5158.877	189.7536	212.3057	Local	GPS	1/27
28								

SpatialXL - Mining Intelligence

The image displays the SpatialXL software interface, which is designed for mining intelligence. The main window shows an Excel spreadsheet with columns for Description, Date, and SupBot. A 'New Dashboard' window is open, displaying a bar chart of SupBot (Sum) over time, with a legend for dates from 2020-06-01 to 2020-06-14. A 'Filter on Selected' dialog box is also visible, showing a list of MAO IDs and a search field. The background shows a person's hands on a laptop keyboard.

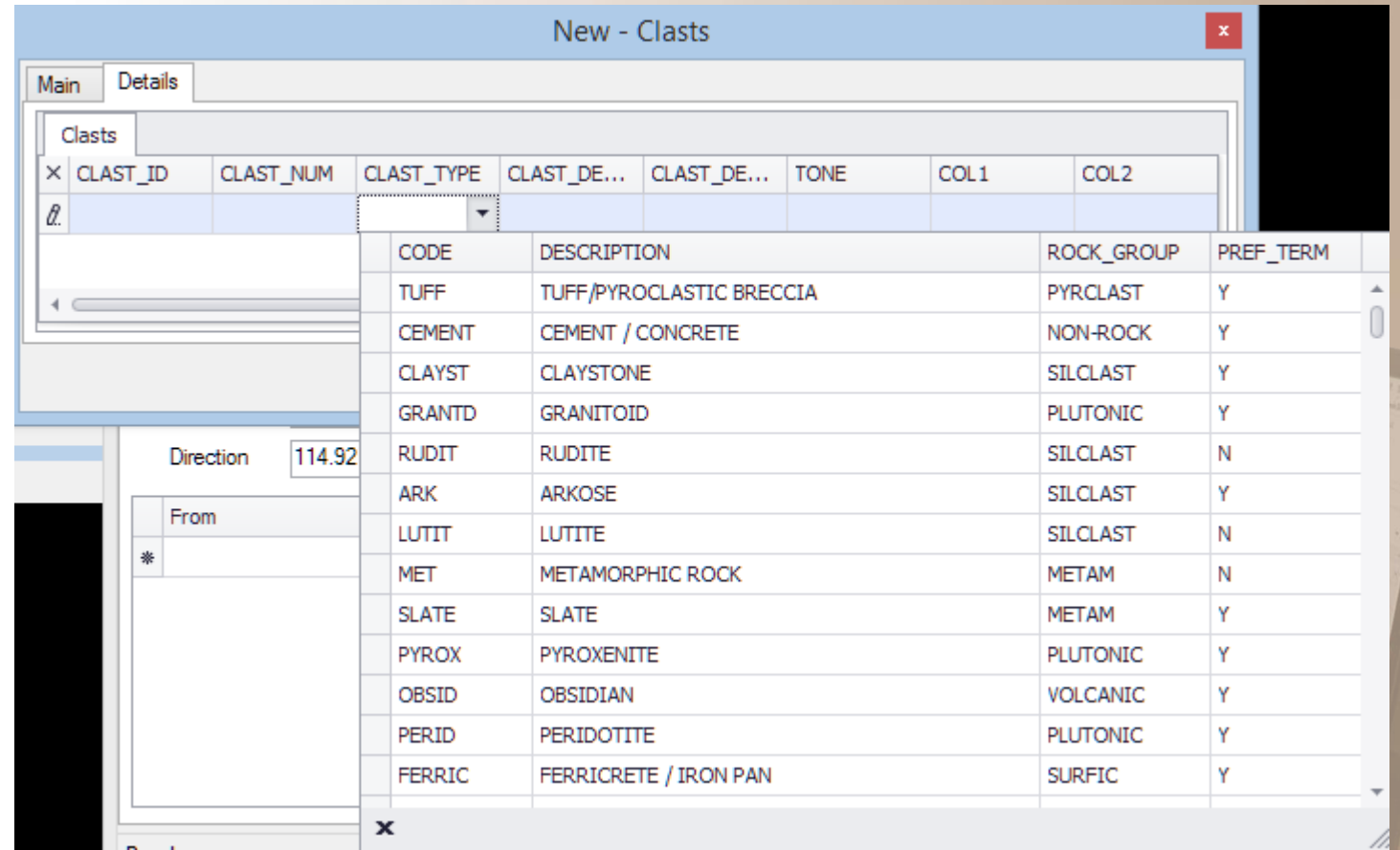
Row	Workplace ID	Description	Text Filters
5	555	MA011194	
6	556	MA011194	
7	557	MA011194	
8	558	MA011194	

Row	Workplace ID	Description	Text Filters
10	MA39242	64 DW1 49A CRF PAN 7 Ledge	2020-06-11 4288.037 -24387.6 -2457.72 MABGDB Elongates
11	MA39136	64 EW 49 VRF PAN 1D	2020-03-03 4620.719 -24873.3 -2423.55 MABGDB Packs
12	MA138900	64 FW 39 VRF PAN 10A	2020-04-20 4018.258 -27006.9 -2392.38 MABFBC Elongates
13	MA39227	64 FW 39 VRF PAN 10B	2020-05-11 4012.813 -27011.9 -2393.09 MABFBC Packs
14	MB011246	64 FW2 35 VRF PAN 2C	2020-01-30 3689.545 -27694.3 -2433.01 MABFGA Packs
15	MA39090	64 FW2 35 VRF PAN 7E	2020-02-11 3520.244 -27637.7 -2382.56 MABFAA Packs
16	MA39180	68 AW 50A VRF PAN 1	2020-03-04 3533.927 -23308.4 -2557.32 MABIAA Elongates
17	MA39012	68 FW 36 VRF PAN 1 Ledge	2019-12-10 3760.543 -27678.6 -2467.48 MABFGB Elongates
18	MA39013	68 FW 36 VRF PAN 2 Ledge	2019-12-10 3770.258 -27663.5 -2466.54 MABFGB Elongates
19	MB006119	68 FW 37 VRF PAN 7B	2020-05-29 3699.289 -27487.6 -2484.46 MABFGC Rock Prof
20	MA39014	68 FW 37 VRF PAN 7E	2020-02-11 3691.511 -27494 -2477.98 MABF Elongates
21	MA39018	68 FW 38 VRF PAN 4B	2019-12-10 3852.596 -27338 -2478.42 MABFDA Packs
22	MA39091	68 FW 39B VRF PAN 8A	2020-02-11 3984.209 -27176.2 -2462.81 MABFDA Packs
23	MA39083	68 FW 40 Rse1 VRF PAN 4 Ledge	2020-01-22 4288.207 -26973.9 -2454.65 MABFBA Mechanic
24	MA39228	68 FW 40 Rse1 VRF PAN 5 Ledge	2020-05-14 4256.537 -26958.6 -2439.2 MABFBA Packs
25	MA39229	68 FW 40 Rse1 VRF PAN 6 Ledge	2020-05-14 4267.343 -26950.2 -2438.32 MABFBA Elongates
26	MA39182	70 EE 49 VRF PAN 2A Ledge	2020-03-09 4441.804 -24464.8 -2583.56 MABGCB Packs
27	MA39144	70 EE 49 VRF PAN 4	2020-03-25 4450.793 -24412 -2577.21 MABGCB Elongates
28	MA138911	70 EE 49 VRF PAN 4 Ledge	2019-12-09 4444.45 -24404.5 -2576.4 MABGDA Packs
29	MA39009	70 EE 49 VRF PAN 6	2019-12-09 4465.112 -24401.3 -2575.82 MABGDA Packs

GeologXL

<http://geologxl.com/>

- GeologXL provides advanced geological mapping abilities.
- It is completely customizable and allows storing your geological data in almost any database or data format.
- GeologXL allows offline operation. Before leaving for the field, download the data you wish to work with.



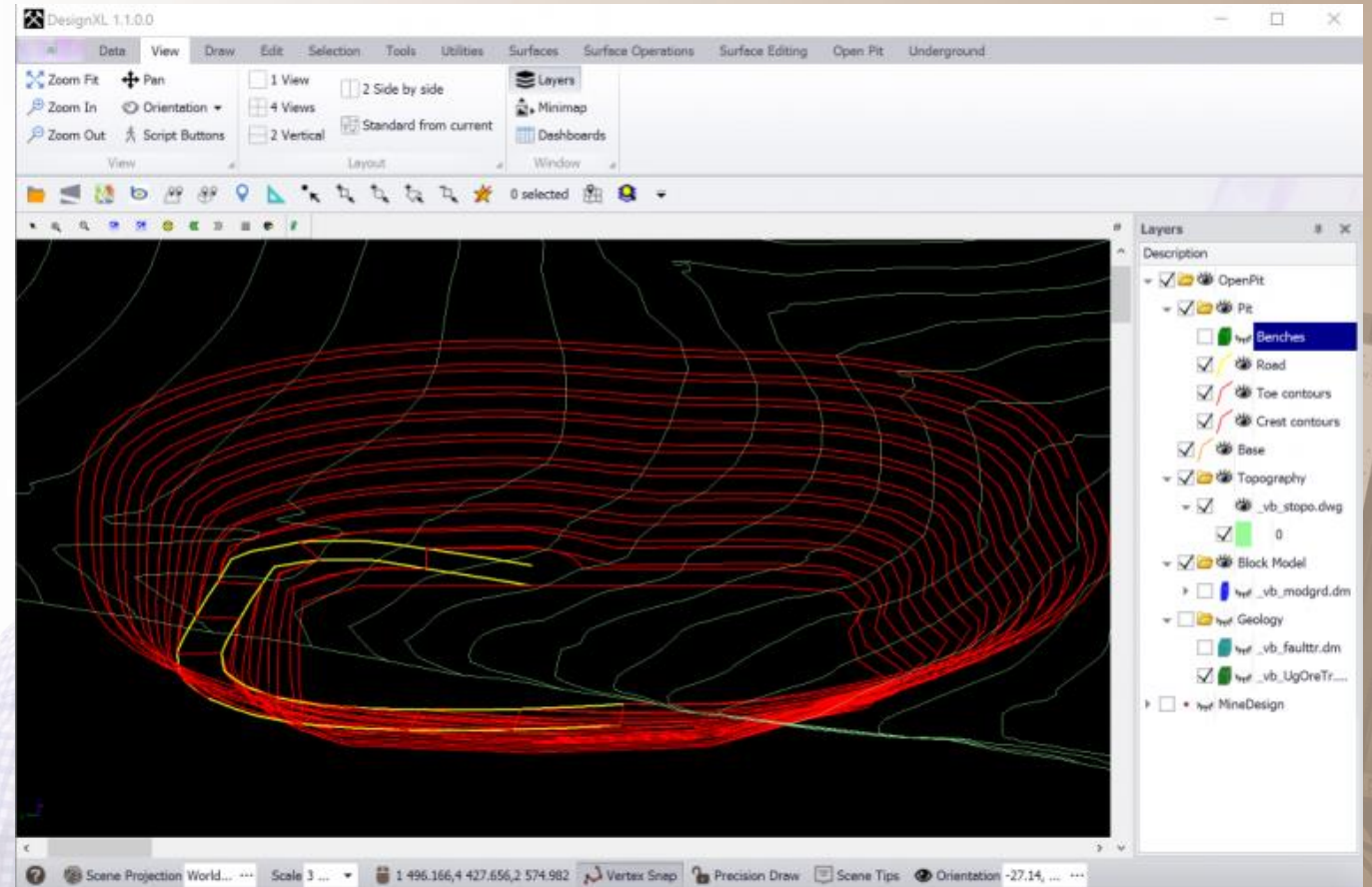
DesignXL

<http://designxl.net/>

DesignXL is the latest enterprise Mine Design solution.

Allows dynamic generation of mine designs for open pit and underground scenarios. Data can be stored in spatial Databases like Oracle Spatial, SQL Server or in the file system. DesignXL integrates with all our other mining software solutions.

Total integration with ScheduleXL for scheduling and NPV optimization



ScheduleXL

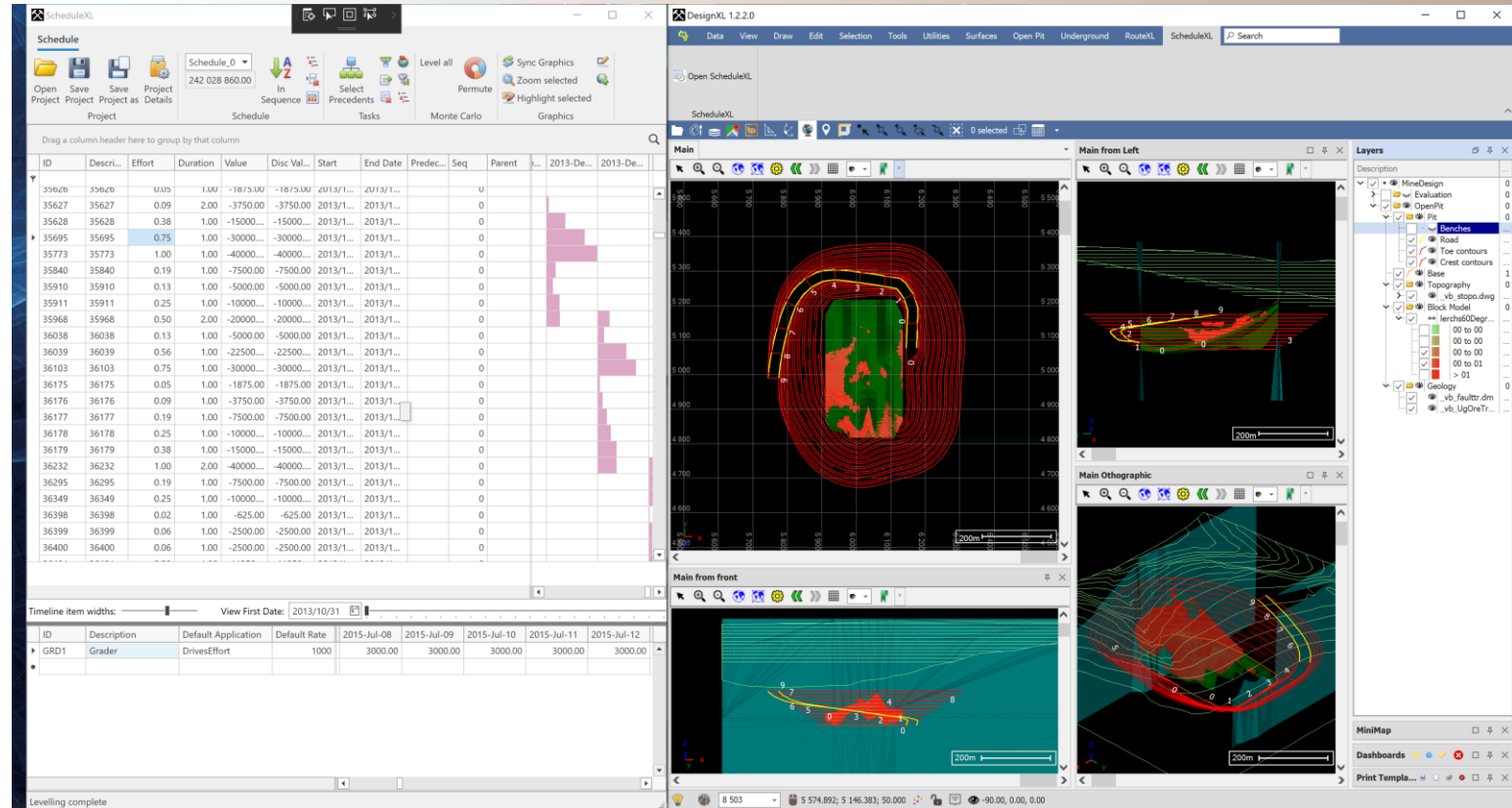
<http://schedulexl.com/>

<http://interactivescheduler.com>

ScheduleXL is the latest enterprise Mine Scheduling solution.

ScheduleXL allows interactive scheduling as well as NPV optimized scheduling.

The NPV optimized scheduling is done using a variable neighbourhood descent method, allowing it to work on huge datasets in a short time (at most minutes)



QubeXL

<http://qubexl.com/> & <https://primethought.biz/>

1. Object Oriented financial modeller
2. Hierarchical top down and bottom up modelling
3. Auto de-aggregation from formulae
4. Self describing formulae
5. Integration with Mine Design and Scheduling products
6. Excel Addin
7. Dashboarding
8. Spatial Links





THANK YOU

Visit primethought.biz for more information

or email

sales@primethought.biz